

welcome to

Open House

First grade

2019-2020



School Schedule

Arrival:

- 7:00am - Students may be dropped-off
- 7:30am - All students are to be in their classrooms ready to start the school day.
- Students arriving after 7:30am are considered tardy.

Dismissal:

- Elementary students are dismissed from 2:15-2:45pm
- Any Elementary student who has a Middle School sibling will be held free of charge until second dismissal at 3:15.
- Late Pick-ups - after 2:45pm

Classroom Schedule

7:30-7:45- Attendance/Do Now

7:45-8:55- Math

8:55-9:15- Recess/Birthdays

9:20-10:00- Social Studies OR Science

10:00-10:35- Lunch

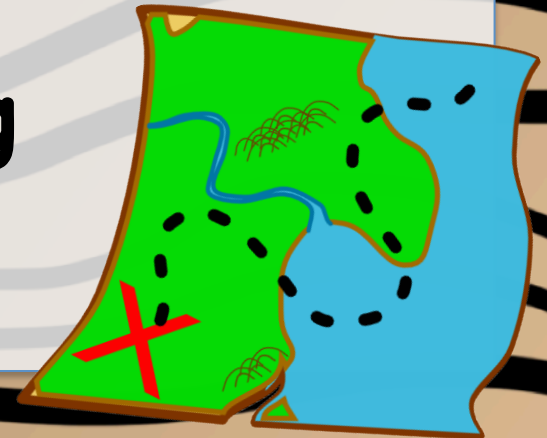
10:40-11:00- Social Studies OR Science

11:00-11:40- Specials

11:45-1:30- ELA

1:30-2:00- Snack and Writing

2:10-2:15- Dismissal



Payments

NO cash payments.

• All checks made payable to Franklin Academy.

• Make credit card payments on-line at:

• <https://pp.franklin-academy.org/payment>

• Lunch payments are to be made through PowerSchool or www.slalunch.com



**DON'T
FEED THE
BEARS!**

Uniform Policy

- ✓ Franklin Brand Uniforms
www.iuniforms.com
- ✓ Collared shirts
- ✓ Properly fitted pants/shorts/
skirts/dresses
- ✓ Socks (solid white, black,
navy)
- ✓ Franklin Sweaters/Jackets
- ✓ P.E. Uniform on Day 3

Behavior Management

Class Dojo

Students receive points daily for their behavior. Points can also be taken away for any behaviors that need improvement.

At the end of each week, any students who have reached 30 points or more will receive a treat/toy from me.

The points needed to earn a reward will increase throughout the year

Positive

Needs work



100% on AR Quiz



Good Behavior - Code Red Drill



Good Behavior - Fire Drill



Good Behavior - Tornado Drill



Helping others



On task



Participating



Persistence



Ready to Work



Staying Seated



Teamwork



Walking nicely in line



Working Quietly



Working hard



Edit skills

Positive

Needs work



Bad report from Specials



Bad report from lunchroom



Calling out



Not showing respect to others



Not using an inside voice in the classroom



Out of seat consistently



Talking during a Code Red Drill



Talking during a Fire Drill



Edit skills



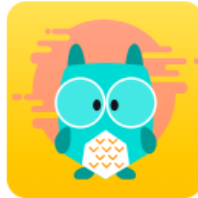
Grading

- **Students will receive a letter grades this year:**
 - **A: 90-100**
 - **B: 80-89**
 - **C: 70-79**
 - **D: 60-69**
- **Test: 40%**
Quiz: 35%
Classwork: 25%
- **Work below a 70% must be signed and returned**

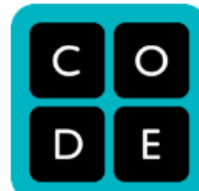


[Teacher Pages](#)[Supplemental Resources](#)[Docs & Files](#)[Franklin Academy](#)[Clever Help Resources](#)

Teacher Pages

[B. Rosado's Page](#)[B. Vallavanti's Page](#)[S. Sasso's Page](#)[Y. Fadruga's Page](#)

Supplemental Resources



- Access online resources through a single access point
- Parents use student credentials to access Clever
- Will be developed over the course of the year to include more resources

Powerschool

- View your child's grades
- View your child's attendance
- View your child's lunch and fee balances
- Email the teachers quickly
- View your service hour totals
- Setup automated requests and alerts
- Accessed through our school website

<https://ps.franklin-academy.org>



The screenshot shows the Franklin Academy Powerschool login interface. At the top, the Franklin Academy logo is displayed. Below it, the Powerschool logo is visible. The main heading is "Student and Parent Sign In". There are two buttons: "Sign In" and "Create Account". A "Select Language" dropdown menu is set to "English". Below that are input fields for "Username" and "Password". A link for "Forgot Username or Password?" is located below the password field. A "Sign In" button is at the bottom right. At the very bottom, a message reads "Welcome to the 2018-19 School Year!".

How can I help my child at home?

- **Refer to the class website under "Weekly Skills" and then "Home Reinforcement."**
- **Students should be doing i-Ready at home regularly for Reading and Math.**
- **Read AR books at home weekly. AR tests done at school.**
- **Extra practice is sent home as needed.**

ACCELERATED READER

- Accelerated Reader (AR) is a computer-based program designed to increase reading comprehension.
- Students will take the S.T.A.R test. This helps determine the student's AR goal for the quarter.
- The student's Independent Reading Level is the level at which the student can read with little to no help.
- Grade Equivalent (GE) is the level at which a student comprehends what he/she hears and reads.
- The Zone of Proximal Development is the zone of predicted growth. Students should choose books within these levels for AR.
- AR home connect for parent resources.

AR and Grades

AR is worth 2 grades each quarter (starting in the Second Quarter).

Student's AR Accuracy is worth 1 quiz grade in ELA. How well students perform on AR quizzes determines this score. Performing poorly on AR quizzes can negatively impact the students ELA grade.

Student AR Goals are worth 1 classwork grade. Reaching an AR goal will give the student a 100% as a classwork grade while reading half their goal will give the student a 50%.



Curriculum and Resources Overview

All material is updated weekly on the class website.

ELA: Wonders - Reading and Grammar

Math: GO Math

Science: STEMscopes

Social Studies: HMH Kids Discover

Home access is available for all resources.

Please use Resources tab on the class website.

Username and Passwords are in Communication Folder.

Communication Folder

- **Return to school:**
 - **Graded work must be signed and returned to school if below a 70%**
 - **Keep at home**
- **Middle pockets:**
 - **Username/password keeper**
- **Keep at home**
 - **Work students can keep at home.**

Attendance Procedures

To report an excused absence please send an email to the following address:

attendance-pp@franklin-academy.org

Refer to our Attendance Policy for a list of valid reasons.

Your email should include the following:

- First and Last Name of Person Reporting Absence
- Student's First and Last Name
- Grade Level
- Homeroom Teacher
- Date of Absence
- Reason for Absence

Service Hours

- Per the Parent School Contract, parents must provide the following number of service hours:
 - 8 hours per family

- Ways you can earn service hours
 - Cafeteria
 - Car line
 - Copies/Projects
 - School events

Important information

- 1. Tests- reading/spelling/grammar every other week.**
- 2. Birthdays during recess.**
- 3. Clever badge**
- 4. Password Tracker**